



At Scandic Frankfurt Museumsufer you can enjoy a fantastic view of the Frankfurt skyline or the banks of the river Main. The location between the trade fair and the Museumsufer offers the perfect accommodation for both business and leisure guests. Look forward to sustainable conferences and events with up to 285 participants.

## YOUR CONFERENCE VENUE IN FRANKFURT SCANDIC FRANKFURT MUSEUMSUFER

### Conferences and events

- 7 meeting rooms for 10 to 285 persons
- 432 m<sup>2</sup> meeting space
- Fresh air ventilation system (T5 / F7 filter)
- Daylight and full darkening
- Modern conference technology

#### VIDEO MEETING ROOMS

### Always included

- Beamer and screen, free WIFI, pin board and flipchart, paper and pens
- When booking a conference package, fair trade organic coffee, tea, Scandic water, Vio organic lemonade and spritzers, juices and healthy snacks are available all day in the foyer

### Restaurant

- Scandic breakfast with over 100 products, min. 50% of which are organic, as well as fair trade organic coffee
- Regional and seasonal cuisine in the à la carte restaurant
- Bar and lounge
- Terrace

### SCANDIC FRANKFURT MUSEUMSUFER

Wilhelm-Leuschner-Straße 44 • 60329 Frankfurt am Main

Tel. +49 69 9074 59 0 • Fax: +49 69 907459 335

museumsufer@scandichotels.com • scandichotels.com/museumsufer

📍 Scandic Frankfurt Museumsufer • 📱 scandicfrankfurtmuseumsufer

### Hotel rooms

- 293 rooms on 17 floors
- 194 standard rooms
- 92 Superior Best View rooms
- 7 Master Suites
- 11 barrier-free rooms
- 26 rooms with connecting door
- Free WIFI
- Room safe
- Flatscreen TV
- Climate control
- Bathroom with cosmetic mirror
- Hairdryer
- Iron and ironing board
- Wooden floor
- Kettle, coffee and tea selection
- Mini fridge

**Scandic**



# YOUR CONFERENCE VENUE IN FRANKFURT SCANDIC FRANKFURT MUSEUMSUFER

## Overview conference rooms

ROOM	SQM	LENGTH, WIDTH, HEIGHT	BLOCK	U-SHAPE	CLASS ROOM	THEATRE	BANQUET	CABARETT
Raum 23	23	6,80 x 3,30 x 3,40	12	-	-	-	-	-
Raum 25	25	6,40 x 3,80 x 3,40	12	-	-	-	-	-
Raum 41	35	6,00 x 5,30 x 3,40	10	12	12	18	16	10
Raum 17	48	7,70 x 6,20 x 3,40	16	16	24	42	24	15
Raum 63	157	14,00 x 11,20 x 4,00	24	34	90	170	96	60
Raum 53	69	9,30 x 7,40 x 4,00	16	22	40	88	40	25
Raum 43	75	13,60 x 5,50 x 4,00	20	20	48	72	56	35
Raum 63 + 53	257	21,40 x 12,00 x 4,00	46	46	130	240	104	75
Raum 63 + 53 + 43	350	26,90 x 13,00 x 4,00	54	54	180	285	176	110
Raum 53 + 43	142	12,90 x 11,00 x 4,00	24	34	80	150	80	50

## Further services and benefits

- 24h Scandic shop in the lobby
- Gym
- Bicycle rental

## Traffic connections and parking

- Airport Frankfurt 12.5 km
- Frankfurt central station 500 m
- Baseler Platz streetcar station (lines 12, 16, 21) 350 m
- Public parking garage (120 spaces) 0 m
- Opera Frankfurt 600 m
- Fair 1.9 km
- Roman & Paulskirche 1.2 km
- Museum bank 700 m

## SCANDIC FRANKFURT MUSEUMSUFER

Wilhelm-Leuschner-Straße 44 • 60329 Frankfurt am Main

Tel. +49 69 9074 59 0 • Fax: +49 69 907459 335

museumsufer@scandichotels.com • scandichotels.com/museumsufer

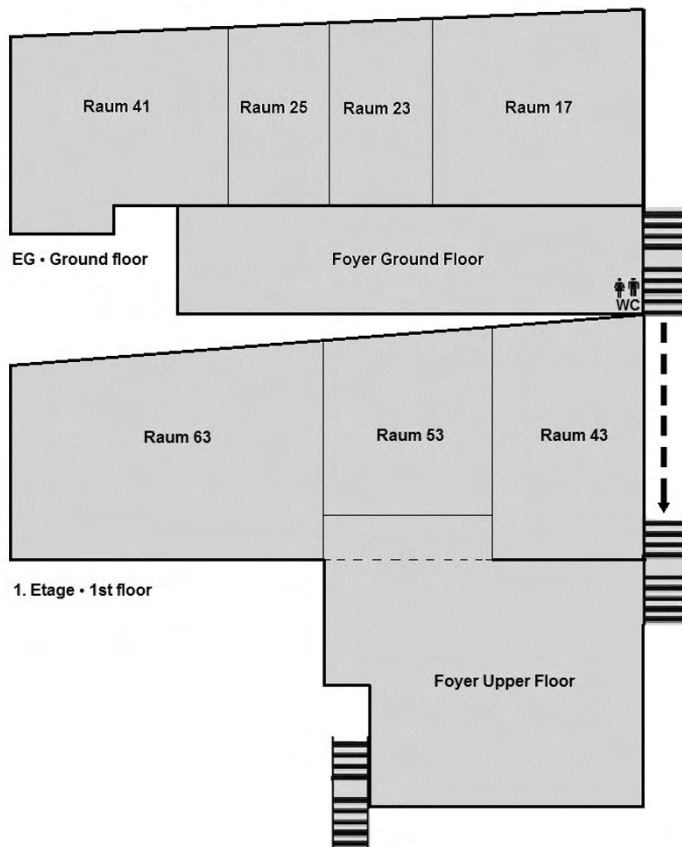
📍 Scandic Frankfurt Museumsufer • 📱 scandicfrankfurtmuseumsufer

**Scandic**



# YOUR CONFERENCE VENUE IN FRANKFURT SCANDIC FRANKFURT MUSEUMSUFER

## Room plan conference area ground floor and 1st floor



## Contact

Our Convention Sales Team will be happy to assist you with booking inquiries:

- +49 69 907 459 399
- [convention.museumsufer@scandichotels.com](mailto:convention.museumsufer@scandichotels.com)

**ENQUIRE NOW**

Accessibility  
certified



## SCANDIC FRANKFURT MUSEUMSUFER

Wilhelm-Leuschner-Straße 44 • 60329 Frankfurt am Main  
Tel. +49 69 9074 59 0 • Fax: +49 69 907459 335  
[museumsufer@scandichotels.com](mailto:museumsufer@scandichotels.com) • [scandichotels.com/museumsufer](https://scandichotels.com/museumsufer)  
 Scandic Frankfurt Museumsufer • [scandicfrankfurtmuseumsufer](https://www.instagram.com/scandicfrankfurtmuseumsufer)

**Scandic**